



# Kid Konnection

St. Peter's Episcopal School

March 2017



## Message from the Director: Janet Boutin

What a blessing it was to have so many grandparents on campus during Grandparents Week! The children enjoyed sharing Children's Chapel and their daily activities with these very special adults in their lives. Thank you for joining us.

Thank you for supporting our first "For The Best Beginning" community luncheon and our Helping Hearts fundraisers. I would especially like to thank our School Board and staff for the time they spent planning and preparing for these events. You helped us raise over \$30,000.00. 100% of all proceeds raised will benefit the school's programs, especially the Scholarship Program.

March is a busy month for St. Peters. We will continue the registration process for the 2017—2018 school year. **Priority Registration** (for current St. Peters families) began February 21st. If you know another family that would like registration information, please have them call the School Office or visit our website: [www.stpeterskerrville.com](http://www.stpeterskerrville.com).

In April, we will start our **Annual Mother's Day Campaign**. Our campaign will end with our students honoring our special mothers in their weekly Children's Chapel. The Mother's Day Chapel will be held on Wednesday, May 10th. Your contributions allow wonderful schools like ours to thrive and grow. Your generosity will allow our teachers, and indirectly you, to have a positive influence on the young children of our community. We always appreciate your support but always remember all of our fundraisers are optional.

Thank you!

"top o' the mornin'  
to ye!"



+ Bee Positive + Bee Humble + Bee Still + Bee Proud + Bee Humble + Bee Still + Bee Prayerful + Bee Grateful +

Illustration of a beehive, a bee, and a honey pot. The beehive is yellow with a pink heart on top. A bee is flying near it. A honey pot is labeled 'HONEY'.



Pat Davis  
Church Member and Donor



## Pesticides on Campus

The State of Texas requires that our school families know that pesticides are used on our campus. St. Peter's School is treated quarterly by a licensed pest control operator.



Janet Boutin, Director  
830-257-0257



My Bug  
Collection

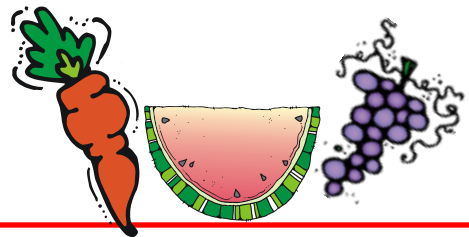


## "Growing Foods"

Strong bodies for strong minds

When it is your turn to send snacks . . . Please send **nutritional snacks**.

Here are a few examples kids usually like: Cheese sticks, yogurt, apple sauce, carrots and dip, cheese and crackers, raisins and if you send fresh fruits . . . The teachers will be glad to cut it up.

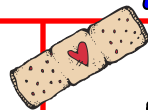
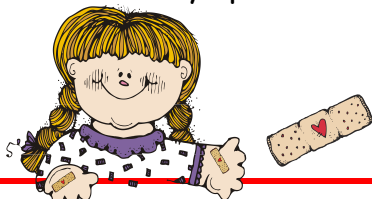


# "Health and Safety At School"



## KEEPING KIDS HEALTHY

1. Keep students home if they are sick, help us prevent illness from spreading.
2. Have children wash hands frequently with soap and water.
3. Cover your mouth and nose when coughing or sneezing. We teach them to cough into their elbow (not their hands).
4. Seek medical attention early if your child has flu like symptoms.



## Please ...

do not bring a sick child to school. Children must be "fever free" for 24 hours in order to return to school.

Regular hand washing keeps the germs away.



boo boos happen!







## End of Year Family NAEYC Questionnaire

Once again it is time for our NAEYC Annual Family Survey. The survey will come home in your child's backpack. Please fill out the survey and drop it off in our big NAEYC drop-off box within a couple of days. Feel free to call the School Office if you have questions when filling out the survey.

The survey is part of our NAEYC self assessment. Your perspective of our program is essential to our continued success. Also, the survey is confidential and all families will have an opportunity to respond. For more information on NAEYC, the survey and our School's accreditation, visit [www.rightchoiceforkids.org](http://www.rightchoiceforkids.org).

Thank you for your input and ongoing support of our School and staff.



Misty O'Fiel  
President 2016-17

Janet Boutin  
School Director



## Toy Chapel Thank You Letter from Homespun, E.C.I.

Dear Children and Families of St. Peter's Episcopal School,

It was such a blessing getting to see each of you at the Annual Toy Chapel. It wasn't just the toys being given that touched my heart so much but, the joyful spirit in which they were given. I hope and pray that your heart is filled with abundant joy this Christmas and New Year as you imagine another child opening your special gift. It is sure to bring a smile across his or her face!

May the Lord bless you for your generous giving.

Sincerely,  
Hill Country ECI

What Early Childhood Research tells us about how young children learn . . .

What is "Developmentally Appropriate Practice"?

You probably noticed our classrooms have a lot of bustle and noise, children are up doing things, talking, playing, and exploring. Our classroom environments differ from the old grade-school images of a teacher doing a lot talking at a blackboard while children sit and listen quietly at their desks.

Research and experience show us that to be effective with young children, teaching practices need to be "Developmentally Appropriate." What this means is educators need to think first about what young children are like and then create an environment and experiences in tune with children, that's why we practice "hands on" learning.

Early childhood, after all, is a time in life quite different from adulthood, and even later school years. Children ages 3-6 learn more through direct interactive experiences than through just listening to someone talk or looking at flash cards. They learn extraordinary amounts through play and exploration. For younger children their learning needs to be relevant and interesting on the day they learn it, not just in the context of some future learning.

Based on research about early childhood, we design our program to fit young children. It works a lot better than trying to redesign children! An NAEYC developmentally appropriate program like ours is age-appropriate. To make the program an even better place for every child, we gear our classroom environment and activities to our community and our families. We try to learn about each child's family, cultural background, past experience, and current circumstances. With this knowledge we work to create a program that fits the children and the families we serve.

Janet Boutin  
School Director

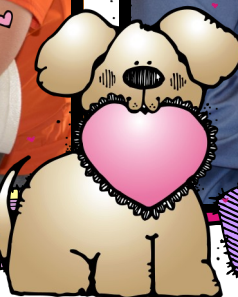




# Grandparent's Day



Kindergarten Class 2017





Thank you for  
visiting our school!

grandpa  
loves me!



grandma loves  
me



we  
love  
you

